

Now supports  
Mobile Calibration  
with ColorTRUE app.



# COLORMUNKI DISPLAY & i1DISPLAY PRO

Display and Projector Calibration Solutions for all Types of Color Perfectionists



# Color Perfectionists Unite!

Nobody wants to spend a lot of time at their monitor perfecting images only to find that their display wasn't accurately showing the file. What you see on your monitor, mobile device or projector has to match your digital file or you will never be happy with the result no matter how much time you devote to perfecting it. This is why **Color Perfectionists around the world count on color management solutions from X-Rite Pantone.**

Each solution comes complete with our most technologically advanced colorimeter bundled with new display and projector profiling software to ensure unrivaled color accuracy and consistency now and in the future. The ColorMunki Display delivers amazing results at the speed of life thanks to its intuitive wizard-driven interface. The i1Display Pro is the ultimate solution for creative professionals who demand options, flexibility and perfection. No matter which solution you choose, the color you see will be the color you'll get. **How perfect is that!**

## TECHNOLOGICALLY ADVANCED HARDWARE

Both ColorMunki Display and i1Display Pro devices feature an advanced, high-end, optical system with custom-designed filters that provide a near perfect match to the color perception of the human visual system, delivering superior color measurement results. Both devices fully support all modern display technologies, including LED backlight and wide gamut displays. Both devices are spectrally calibrated at the factory, making them fully field upgradeable to support future display technologies.

### The ergonomic all-in-one design combines three important functions:



**Ambient Light Measurement** – an integrated ambient measurement diffuser allows you to take ambient light measurements of your work environment.



**Display Profiling** – rotate the ambient diffuser arm and adjust integrated counterweight, with push button action, along the USB cord for display profiling ease.



**Projector Profiling** – rotate the ambient diffuser arm to use as a tabletop stand for device positioning, or use the built-in threaded tripod mount for larger venues.

## Now Supports Mobile Device Profiling with FREE ColorTRUE Mobile App

ColorTRUE is the only color management app for iOS and Android devices that delivers unique color tools to ensure your images are displayed with consistently accurate color from desktop to mobile.

Learn more: [xritephoto.com/colortrue](http://xritephoto.com/colortrue)



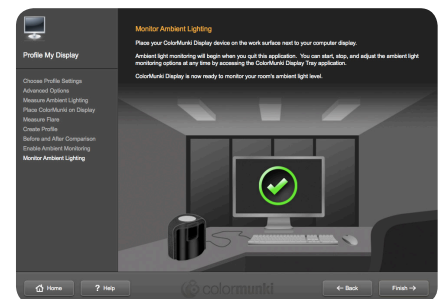
Coloratti © Martin Bailey

## NEXT GENERATION PROFILING SOFTWARE

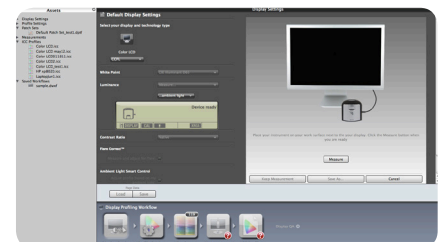
i1Display Pro and ColorMunki Display each incorporate next generation display and projector profiling software technologies to make the match between your display and printer more perfect. Once you take the guesswork and frustration out of making sure the color you see on your monitor or projector is the color you expect from your printer, you'll save time and money and gain full creative control over your images.

### Advanced technologies include:

- **Ambient Light Measurement** – automatically determine the optimum display luminance for comparing prints to your display, based on a measurement of the lighting conditions where prints will be viewed.
- **Ambient Light Smart Control** – the intensity or amount of ambient light surrounding your workspace affects the way you perceive colors on your display. These solutions can compensate for this effect and provide the option to automatically adjust your profile or simply notify you as ambient light conditions change.
- **Flare Correct™** measures and adjusts your display profile for reduced contrast ratios caused by flare light (or glare) falling on surface of display. By accurately measuring your effective display contrast ratio, you'll have an even more accurate display profile.
- **Intelligent Iterative Profiling**, an adaptive technology that produces optimized results for maximum color accuracy on each unique display every time you profile.
- **Automatic Display Control (ADC)** technology automates the adjustment of your display's hardware (brightness/backlight, contrast, and color temperature) to speed up the profiling process and eliminate manual adjustments to ensure highest quality results.



ColorMunki Display software



i1Profiler software



*We want your life to be perfect.  
Let's start with ColorMunki calibrated and profiled displays.*

## colormunki | DISPLAY

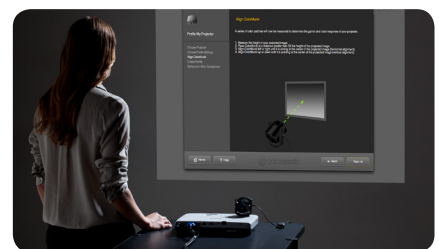
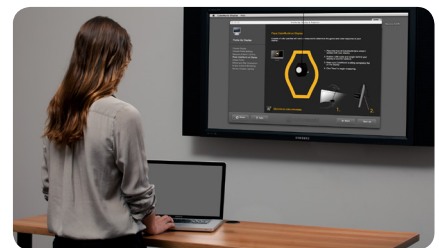
ADVANCED DISPLAY CALIBRATION MADE EASY FOR COLOR PERFECTIONISTS



**Simply. Amazing.** ColorMunki Display provides amazingly accurate display and projector calibration and profiles for Color Perfectionists – whether a passionate or professional photographer or designer – working at the speed of life. Incorporating an easy, wizard-driven interface, ColorMunki Display offers everything you could possibly need to get you to a brilliantly-calibrated display or projector while helping you stay focused on doing what you love. For Color Perfectionists seeking simplicity, the ColorMunki Display will absolutely amaze you.

### Enhanced features include:

- Display, Laptop and Projector Profiling
- Technologically advanced and ergonomic multi-functional measurement device
- Easy to use software – “Easy” and “Advanced” modes with simple one-click presets or wizard-driven options for more control
- Intelligent Iterative Profiling – an adaptive technology that measures and analyzes the color capabilities of each unique display for increased accuracy of profile
- Ambient Light Smart Control - measurement, compensation and ongoing monitoring of ambient lighting conditions
- Flare Correct™ - measurement and compensation of display surface glare
- Automatic Display Control (ADC) adjusts your display's hardware to speed up process and eliminate manual adjustments



*In our world, perfection is not too much to ask for.  
i1Display Pro delivers.*



## i1 | DISPLAY PRO

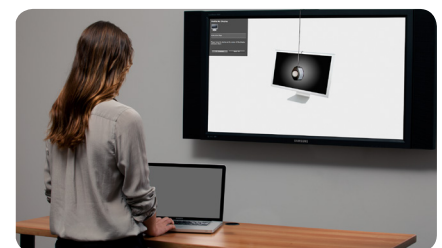
PROFESSIONAL DISPLAY CALIBRATION FOR THE MOST DEMANDING COLOR PERFECTIONISTS



**Perfectly. Amazing.** The i1Display Pro is the ultimate choice for discerning photographers, designers or any imaging professional looking for the highest on screen color accuracy for displays, laptops and projectors. i1Display Pro provides serious Color Perfectionists with the perfect balance between speed, options and controls for unrivaled color precision.

### Enhanced features include:

- Display, Laptop and Projector Profiling
- Technologically advanced and ergonomic multi-functional measurement device
- Next generation i1Profiler software for calibrating and profiling all modern display and projector technologies including LED & Wide Gamut LCDs
- Infinite control of white point, luminance, contrast ratio, gamma and more
- Multiple monitor and workgroup profiling
- Intelligent Iterative Profiling – an adaptive technology that measures and analyzes the color capabilities of each unique display for increased accuracy of profile
- Profile optimization – create unique patch sets for optimal results
- Ambient Light Smart Control - measurement, compensation and ongoing monitoring of ambient lighting conditions
- Flare Correct™ - measurement and compensation of display surface glare
- Automatic Display Control (ADC) adjusts your display's hardware to speed up process and eliminate manual adjustments
- Display quality check and trending over time
- PANTONE spot color optimization



## FUNCTION ICONS

X-Rite solutions are clearly marked with function icons so you can quickly identify the functionality included in each solution.



Monitor Profiling



Monitor QC



Projector Profiling



Mobile Device Profiling



PANTONE® Color Manager

## OS SUPPORT

Windows® Microsoft® Windows® XP 32bit or Microsoft® Windows Vista® 32 or 64 bit or Microsoft Windows 7® 32, 64 bit, or Microsoft Windows 8® 32 or 64 bit., Intel® Pentium® 4 or AMD Athlon XP™ or better CPU, Latest service packs installed, 512MB of available RAM, 500MB of available hard disk space, Monitor resolution of 1024 x 768 pixels or higher, Dual display support requires either 2 video cards or a dual head video card that supports dual video LUT's being loaded, Powered USB port, Network adaptor installed and driver loaded, DVD drive or high speed internet connect to download the software, Internet connection for software updates, User must have Administrator rights to install, uninstall the application

Macintosh® MacOS X 10.6.x, 10.7.x and 10.8.x [ with latest upgrades installed ], Intel® CPU, 512MB of available RAM, 500MB of available hard disk space, Monitor resolution of 1024 x 768 pixels or higher, Dual display support requires either 2 video cards or a dual head video card that supports dual video LUT's being loaded, Powered USB port, DVD drive or high speed internet connect to download the software, Internet connection for software updates, User must have Administrator rights to install, uninstall the application

## APPLE iOS

- iPad 2, 3rd gen, 4th gen, Air, Mini, & Mini 2nd gen running iOS 7.x or later
- iPhone 4, 4S, 5, 5c, & 5s running iOS 7.x or later
- iPod Touch running iOS 7.x or later

## GOOGLE ANDROID

- Samsung Galaxy running Android 4.0.4 or later
- Google Nexus running Android 4.0.4 or later
- Asus Transformer running Android 4.0.4 or later
- HTC One running Android 4.0.4 or later
- In order to communicate with a measurement device, the hardware must support USB On-The-Go.



**COLORMUNKI DISPLAY**



**i1DISPLAY PRO**

Recommended for:

Serious & professional photographers and designers

Professional photographers, studios, designers, prepress or any imaging pro

### KEY FUNCTIONS

Monitor Profiling:	Yes	Yes
Projector Profiling:	Yes	Yes
Mobile Device Profiling*:	Yes	Yes

### HARDWARE

Colorimeter Device	ColorMunki Display	i1Display
Measurement Sensors:	3 Channel (near perfect CIE color matching functions)	3 Channel (near perfect CIE color matching functions)
Filter Technology:	High end thin film optical grade	High end thin film optical grade
Calibration:	Spectrally based	Spectrally based
Ambient Light Measurement:	Luminance	Luminance & Color
Threaded Tripod Mount:	Yes	Yes
Integrated ambient diffuser:	Yes	Yes
Integrated counter weight:	Yes	Yes
Measurement speed:	Standard	5x faster than Standard
All in one design:	Yes	Yes
Status LED:	Yes	Yes
Support for new & emerging display technologies:	CCFL, White LED, RGB LED, Wide Gamut, New Future (field Upgradable)	CCFL, White LED, RGB LED, Wide Gamut, New Future (field Upgradable)

\*requires ColorTRUE app download

# TOOLS AND FUNCTIONS AT-A-GLANCE



**COLORMUNKI DISPLAY**



**i1DISPLAY PRO**

SOFTWARE		
Platform:	ColorMunki	i1 Profiler
User Interface:	Wizard - Easy & Advanced modes	Wizard - Basic Mode
	-	User Driven - Advanced mode, direct access workflow
White Point:	Predefined options (D50, D55, D65, & Native)	Predefined options (D50, D55, D65, D75, & Native)
	-	Custom (color temperature or xy)
	-	Measurement of Ambient
	-	Measurement of another display
	-	Measurement of paper
White Luminance:	Predefined options (80, 90, 100, 110, 120, 130, 140, & Native)	Predefined options (80, 100, 120, 250, & Native)
	-	Custom (80-250 cd/m2)
	-	Measurement of Ambient
	-	Measurement of another display
	-	Measurement of paper
Contrast Ratio:	Maximum (native)	Maximum (native)
	-	Custom (user defined)
	-	Optimized based on printer profile
	-	ICC PCS Blackpoint (287:1)
Tone Response:	Predefined options (1.8, 2.2)	Predefined (1.8, 2.2, 3.0, sRGB)
Ambient Light Smart Control:	Yes	Yes
Flare Correct:	Yes	Yes
Characterization target:	Iterative – fixed size	Iterative – variable size
	-	Optimization based on PANTONE colors
	-	Optimization based on image
Display Calibration:		
X-Rite ADC (auto adjust):		
Apple Displays:	Yes	Yes
Non-Apple DDC displays:	Yes	Yes
Instrument guided manual adjustment of display:	Yes	Yes
LUT adjustment to achieve desired luminance:	Yes	Yes



**COLORMUNKI DISPLAY**



**i1DISPLAY PRO**

SOFTWARE		
Chromatic Adaptation:	Fixed (Bradford)	Predefined (Bradford, CIECAT02, Sharp, CMCCAT2000)
ICC Profile Version:	2 or 4	2 or 4
Profile Type:	Matrix only	Matrix or Table based
Multiple Display Profiling:	Yes	Yes
Multiple Display Matching:	Yes - Display Match feature	Yes - Save, reuse, & share workflows
3D Interactive Gamut Plot	No	Yes
Profile Validation:	Visual - default images	Visual - default images
	Visual - user defined images	Visual - user defined images
	-	Numeric dE - industry standards
	-	Numeric dE - Spot Colors
	-	Numeric dE - Images
	-	User defined Pass/Fail tolerances
	-	Trending of display performance over time
Display Uniformity Test:	-	9 points (3 x 3)
	-	White Point & Luminance
	-	Absolute and delta from center point
	-	User defined Pass/Fail tolerances
	-	Color coded results graph
Ambient light monitoring:	Yes	Yes
Ambient light correction over time:	Automatic profile adjustments or user notified	Automatic profile adjustments or user notified
Profile Reminder	Yes	Yes
Projector Profiling:		
White Point	Native and Predefined	Native and Predefined
Alignment without tripod	Yes	Yes
Alignment with tripod	Yes	Yes
PANTONE® Color Manager software	-	Yes
Operating System Support	Windows® XP 32 bit	Windows® XP 32 bit
	Windows® Vista® 32 or 64 bit	Windows® Vista® 32 or 64 bit
	MacOS X 10.5 and 10.6	MacOS X 10.5 and 10.6

# COLOR PERFECTION FROM CAPTURE TO VIEW TO PRINT

## i1 SOLUTIONS FOR THE MOST DEMANDING COLOR PERFECTIONIST

*i1 Solutions are the professional's choice for exceptional camera, display, projector and printer calibration and profiling.*

Color Perfectionists know that a calibrated and profiled workflow is a critical element in a successful and efficient creative workflow. What you capture on your camera, see on your monitor (or projector) or view on your print has to match or you will never be happy with the result no matter how much time you devote to perfecting it. i1 provides the highest level of color accuracy in the industry with unrivaled speed, accuracy and flexibility. From software to hardware, i1 provides Color Perfectionists with the perfect balance of speed, options and controls to fit your individual workflow.

**In our world, perfection is not too much to ask for. i1 solutions deliver!**

## COLORMUNKI SOLUTIONS FOR COLOR PERFECTIONISTS WORKING AT THE SPEED OF LIFE

*ColorMunki solutions are made easy for entry level and advanced Color Perfectionists who desire great color! No color science needed!*

ColorMunki gets you to an amazingly calibrated and profiled display, projector or printer in minutes. We eliminate all the frustration and irritation so you have that much more time to focus on what you love doing. No matter which solution you choose, ColorMunki offers everything you could possibly need to get you to a brilliantly calibrated and profiled workflow in no time. For Color Perfectionists seeking simplicity, the ColorMunki line will absolutely amaze you.

**If only everything in life were this easy.**



© 2014, X-Rite, Incorporated. All rights reserved. X-Rite logo and ColorChecker are trademarks or registered trademarks of X-Rite, Incorporated and its affiliates in the United States and/or other countries. PANTONE® and other Pantone, Inc. trademarks are the property of Pantone, Inc. Pantone is a wholly owned subsidiary of X-Rite, Incorporated. Macintosh, Mac and Mac OS are trademarks of Apple, Inc. Intel and Pentium are trademarks of Intel Corporation in the U.S. and other countries. Microsoft, Windows, Windows Vista and Windows 7 are registered trademarks or trademarks of Microsoft Corporation in the United States and/or other countries. All other trademarks are the property of their respective owners.

  
**PANTONE®**

Color Perfectionists Unite!

xrite.com | xritephoto.com | pantone.com